

LALIQUE POINT PENINSULA LOT

West Bay, Cayman Islands

PROPERTY DETAILS

Price: US\$2,750,000	MLS#: 413439	Type: Land
Listing Type: Low Density Residential	Status: Current	Width: 200
Depth: 200	Built: 0	Acres: 0.6

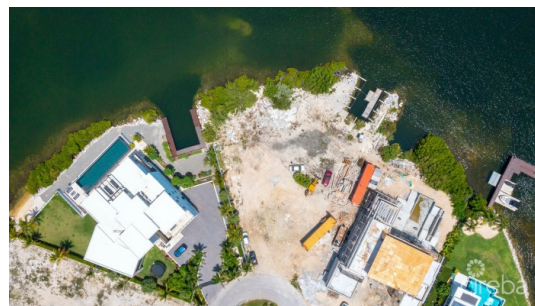
PROPERTY DESCRIPTION

Build your dream home on this incredible 0.60 acre Lalique Point Peninsula home lot. This lot is situated looking out onto the luscious mangrove cove providing ultimate privacy. With a protective dock slip, hop on your boat to enjoy adventures in the north sound. Lalique Point amenities include; guarded gated entry, playground areas, a clubhouse, tennis court. Lalique point is a highly sought-after location in the heart of Seven Mile Beach Corridor, minutes from all the action. Measurements are approximate.

PROPERTY FEATURES

Views	Canal Front, Water Front
Block	17A
Parcel	229
Zoning	Low Density residential
Sea Frontage	200
Road Frontage	59
Soil	Marl

IMAGES





CIREBA MLS LDX feed courtesy of DIAMOND PROPERTIES

***Disclaimer:** The information contained herein has been furnished by the owner(s) and or their nominee and represented by them to be accurate. The listing company, agent and CIREBA MLS disclaims any liability or responsibility for any inaccuracies, errors or omissions in the represented information. The listing details herein are also courtesy of CIREBA (Cayman Islands Real Estate Brokers Association) MLS and/or via LDX (Listing Data Exchange) feed. All the information contained herein is subject to errors, omissions, price changes, prior sale or withdrawal, without notice and is at all times subject to verification by the purchaser(s).