

Address

The Falls, 1114 West Bay Road,
P.O. Box 30673, Grand Cayman KY1-1203,
Cayman Islands

Contact

+1 345 516 3521
paula@diamondproperties.ky



THE CAYMAN ISLANDER HOTEL

District: West Bay, Cayman Islands
MLS# 406210
Width: 495
Status: Current

Price: US\$19,500,000
Type: Land
Depth: 280
Year Built: 1976



AQUA

District: West Bay, Cayman Islands
MLS# 408377
Bed: 4
Status: Pending/Conditional

Price: US\$3,500,000
Type: Residential
Bath: 4.5
Year Built: 2019



CRYSTAL WATERS

District: West Bay, Cayman Islands
MLS# 408548
Bed: 5
Status: Current

Price: US\$2,950,000
Type: Residential
Bath: 6
Year Built: 2009



DIAMOND'S EDGE WATERFRONT IN CRYSTAL HARBOUR

District: West Bay, Cayman Islands
MLS# 409274
Width: 185
Status: Pending

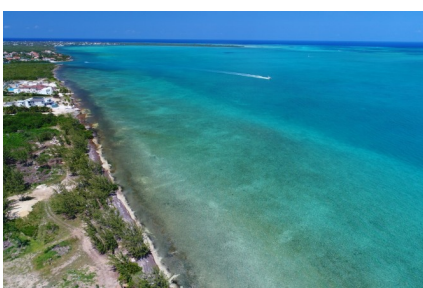
Price: US\$2,200,000
Type: Land
Depth: 300



CONCH POINTE APARTMENT COMPLEX

District: West Bay, Cayman Islands
MLS# 406308
Bed: 16
Status: Current

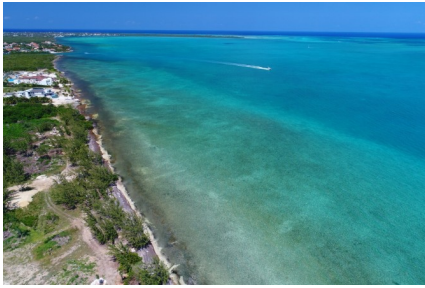
Price: CI\$1,886,000
Type: Multi-Unit
Bath: 16
Year Built: 1996



DIAMOND'S EDGE WATERFRONT IN CRYSTAL HARBOUR

District: West Bay, Cayman Islands
MLS# 409273
Width: 150
Status: Current

Price: US\$1,520,000
Type: Land
Depth: 230



DIAMOND'S EDGE ESTATE PROPERTY

District: West Bay, Cayman Islands

MLS# 410252

Width: 100

Status: New

Price: US\$1,020,000

Type: Land

Depth: 182



KISHA

District: George Town, Cayman Islands

MLS# 409325

Bed: 2

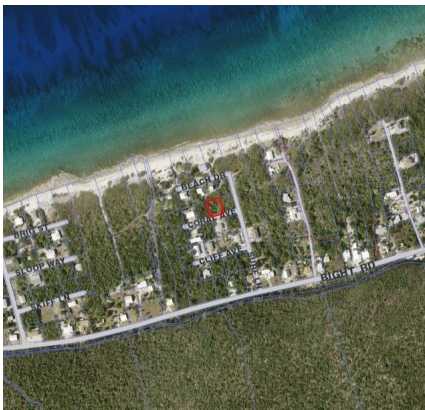
Status: Back On The Market

Price: US\$999,000

Type: Residential

Bath: 2

Year Built: 2005



CORAL AVENUE HOUSE LOT AND BAMBOO HOUSE KIT

District: Cayman Brac Central, Cayman Islands

MLS# 409253

Width: 85

Status: Current

Price: US\$65,000

Type: Land

Depth: 101



SPLENDID VIEW ESTATES

District: North Side, Cayman Islands

MLS# 407767

Width: 100

Status: Pending/Conditional

Price: CI\$45,000

Type: Land

Depth: 100
